



Global Deploy

Global Deploy from Wireless Logic enables solution providers, OEMs and global enterprises to optimise how they design, build and deploy IoT solutions.

Multi-national deployments can be complex, with real difficulties around coverage, technology, product SKU management, security and logistics. A single global SIM with zero-touch provisioning capabilities addresses these challenges and enables IoT devices to be deployed anywhere in the world.

Over-the-air (OTA) reprogrammability of eSIMs and iSIMs enable those solutions to be optimised and economised over time to resolve future changes in coverage, performance and regulations.

Our Global Deploy solutions combine advanced on-SIM technology with rules-based remote SIM provisioning capabilities to simplify and automate these processes.



Find out more about Global Deploy... ➤



Global Deployment with a single SIM

Deploy with confidence using a single global SIM which can be managed over-the-air using rules-based remote SIM provisioning.



Simplify your Supply Chain

Reduce complexity in your procurement and logistics processes. Leverage zero-touch provisioning to manage the transition from factory to field.



Optimise and Economise

Adapt connectivity according to your deployment plans, lifecycle requirements or to mitigate any radio network performance or commercial issues.



Single Point of Integration & Control

Our carrier-grade private infrastructure provides cost effective and secure access to all our radio network partners through a single interconnect.

How we simplify and optimise global deployments

➤ Multi-Service Capability

Our Global Deploy eSIMs and multi-IMSI SIMs are fully compatible with 5G, 4G (LTE Cat-6, Cat-4, Cat-1 and Cat-1 BIS).

➤ Zero-Touch Provisioning

Management and control of eSIMs and iSIMs is automated by remote SIM provisioning (RSP) and advanced rules engines in our platform.

➤ Ability to optimise

Unlike some providers, we offer a wide range of SIM profile options which can be pre-loaded or pushed over-the-air via our rules-based remote SIM provisioning platform.

➤ End to End Control

We operate our own carrier grade networks which provide greater end to end control and consistency of services.

➤ Outlay and operating costs

The cost structure can sometimes be higher for eSIM but total cost ownership is lower with a single SKU which can be managed and optimised over-the-air.

➤ Compatibility

Over-the-air profile management in eSIM and iSIM require specific functionality inside the cellular modules. Our Solutions team can advise and perform compatibility testing if required.

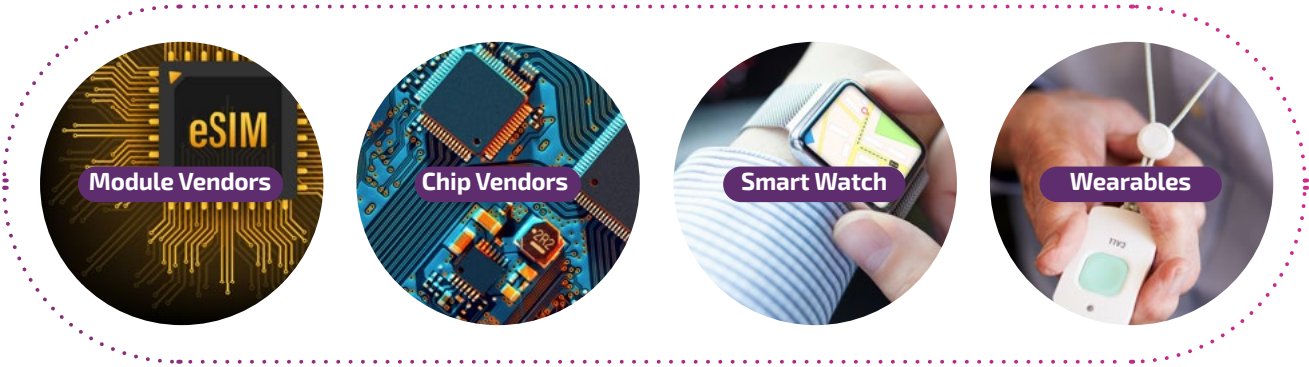
➤ Secure by Design

Our Cloud Secure solution and private network infrastructure including features like IMEI locking, white or blacklisting, VPNs and Private APNs protect your devices and data.

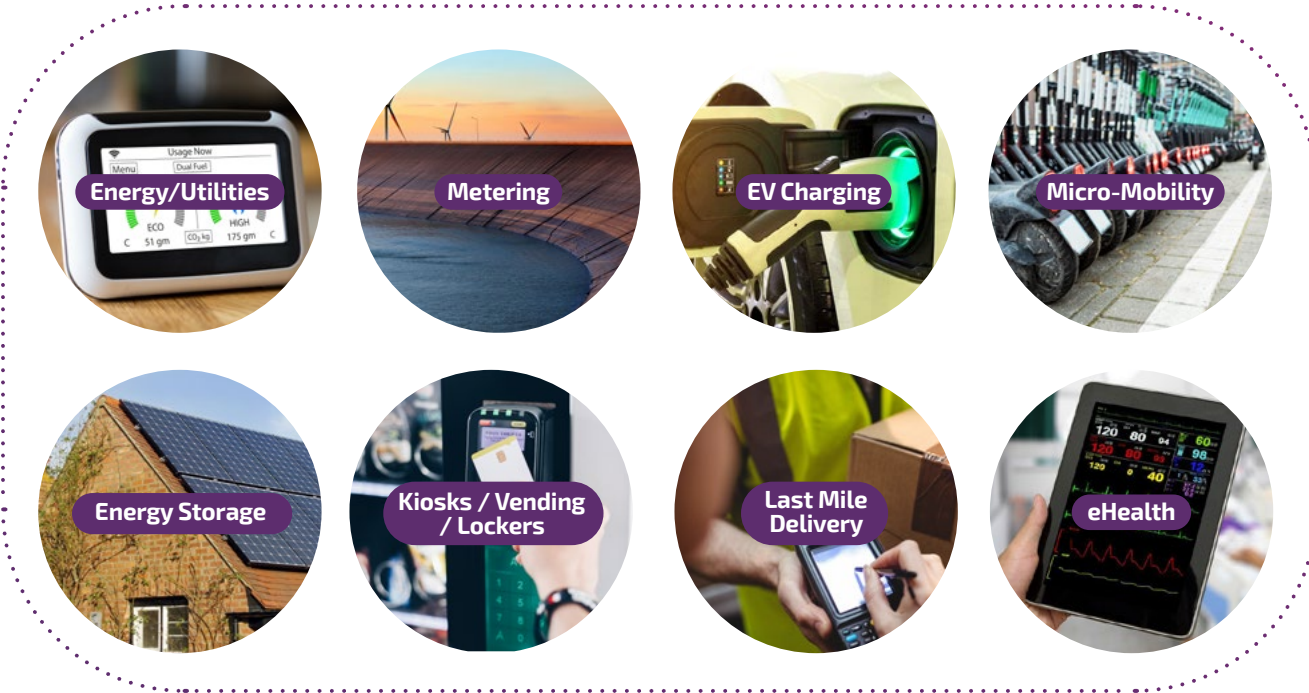


Who **benefits** from our Global Deploy solutions?

Module and Chip vendors developing **embedded iSIM solutions** for miniaturised devices who require the strongest possible **SIM profile options, network control** and **management capabilities**.

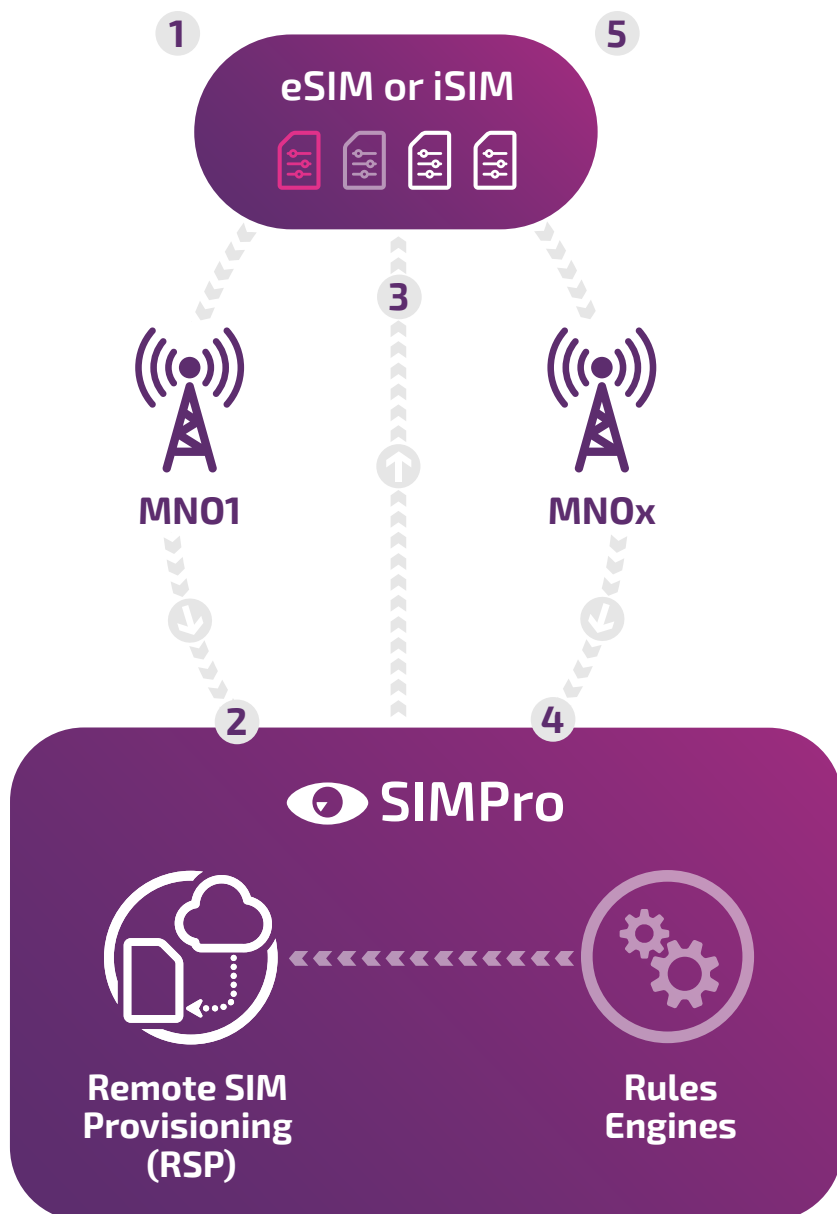


OEMs and Solution Providers who supply products and services globally. Large Enterprises who have **global operations** and **large fleets of devices**.





How Global Deploy works...



1 eSIM and iSIM can host multiple SIM profiles. The Initial connection is established using the bootstrap (primary) profile credentials.

2 When the SIM is connected the RSP will manage any profile updates according to rules engine. Rules can be configured via SIMPro in advance of deployment or later if required.

3 When the rules require it, the RSP pushes a new SIM profile down to the eSIM/iSIM. This profile will be stored as an alternative profile. When commanded by the RSP, this new profile will become the operational SIM profile and will determine which networks and services can be accessed.

4 The device can now connect to the new network and its associated services.

5 Profile changes can be re-initiated if network or business conditions change or if user/location context changes.

The eSIM/iSIM could "fall-back" to the primary profile or adopt another new profile if the Rules Engine and RSP push it down.



Things we connect...



How...



Our 'Built for IoT' network



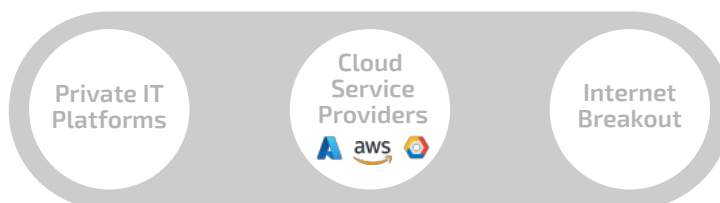
Some of our partner networks



SIMPro



Cloud and Enterprise Interconnects



Talk to our IoT solution experts about Global Deploy... >

Why Wireless Logic?



Global Coverage

Our 'built-for-IoT' network services and partnerships provide global coverage and local access into 50 major networks.



Flexible Solutions

Operator and technology agnostic solutions, with pricing that scales with your business.



SIMPro Platform

Connectivity management through a single, smart window.



Expert Local Support

20+ years' experience in helping our customers design, deploy and manage IoT applications.



Secure & Resilient

Private infrastructure in 15 major data centres transmitting data reliably from device to end-point

Contact us today...

to talk to an expert or get a quote

Call: 0330 056 3300 Email: hello@wirelesslogic.com Web: wirelesslogic.com
